



**SANSKRITI  
UNIVERSITY**  
FOR EXCELLENCE IN LIFE

# SU





# ABOUT THE UNIVERSITY

Nestled in the lap of nature, just 28 km away from Mathura on Mathura-Delhi Highway. Sanskriti University has become a hub of Research & Innovation and a goldmine for new recruiters to hire talented graduates from different domains.

The Campus is ideally located in a serene and pollution free area comprising more than 70 acres and constructed area of more than 7 lac sq. feet. It has state of the art infrastructure, fully equipped labs, well stacked library and above all highly qualified and experienced faculty to provide an experience, worth remembering. The aim of the university is to provide global education without sacrificing Indian ethos and culture. The ultimate aim is to make students very noble human beings and to experience "Excellence in Life"

The course curriculum is industry aligned, research and skill based, creative and innovative thinking is the hallmark of students graduating from the University.

The students are very well received in the job market which is evident from the near cent percent placements, in the very reputed companies and at enviable packages.

Emphasis on research and skill based education has resulted in creative thinking for the students as would be evident from the fact that more than 1500 Papers are published and more than 500 Patents and 25 grants filed by the faculty & students.

Sanskriti University on regular basis organizes conferences, seminars, industrial visits, guest lectures and live projects which prepares our students to be "Industry Ready" resulting into better employability.

The University has received prestigious awards from various media and business houses and ranked among top universities in India by authenticated rating and ranking agencies.

# DISTINGUISHED VISITORS



His Excellency  
Late Dr. A.P.J. Abdul Kalam Ji

Besides having an illustrious Advisory Board, Sanskriti University has been blessed by regular visits of highly placed dignitaries of very renowned personalities, to name a few:



Hon'ble Mr. Dipak Misra Ji,  
Former Chief Justice of India



Air Chief Marshal (Retd.)  
Sh. N.C. Suri Ji



Education Minister,  
Shri Ramesh Pokhriyal Ji



Hon'ble Rajat Sharma  
Editor-in-chief



Hon'ble Vaidya Jayant Deopujari Ji,  
Chairman NCISM



Hon'ble Dr. Raghuram Bhatta U Ji,  
President MARBISM, NCISM



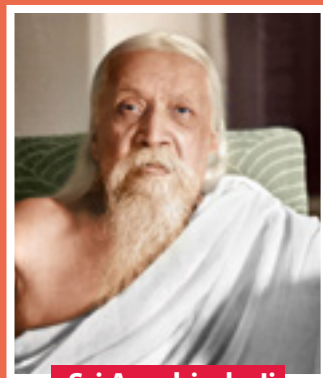
Justice Gyan Sudha Misra Ji

# TIE-UP OF SANSKRITI UNIVERSITY WITH SRI AUROBINDO FOUNDATION FOR INDIAN CULTURE (SAFIC)

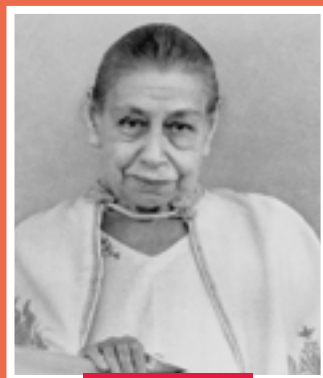
A WING OF SRI AUROBINDO SOCIETY, PUDUCHERRY

Sri Aurobindo Foundation for Indian Culture (SAFIC), a unit of the Sri Aurobindo Society, is dedicated to the exploration of various aspects of Indian culture including dance, drama, architecture, sculpture and music. The research undertaken here offers deep insights into the Indian scriptures and unraveling the hidden wonders and the soul of the Sanskrit language – our glorious inheritance from the days of yore. SAFIC strives to rediscover the genius and outstanding magnificence of Indian culture and works to apply it dynamically to life and all its activities in modern India. It aspires to evoke among the youth a great love for India, pride in their heritage and aspiration and will to create an even greater future.

Sri Aurobindo Foundation for Indian Culture under the aegis of Sri Aurobindo Society is working collaboratively with Sanskriti University in the process of curriculum development, academic delivery, research exchange programs and allied areas and assisting the University in offering certificate, diploma, under-graduate and post-graduate programs in Indian Culture. The Faculty members have been fully trained to impart the teachings as well as the teaching methodology to be adopted. Sanskriti University is the only University in the area offering courses in Indian culture, which is purposefully assisted by SAFIC. These courses will go a long way in making the students aware of the glory of Indian culture.



**Sri Aurobindo Ji**



**The Mother**

# SANSKRITI UNIVERSITY AN INSPIRING PLACE TO STUDY



State of the Art  
Infrastructure



Cosmopolitan  
Culture



Top  
Academicians



Premium  
Placements



Research &  
Innovation



Life  
Learning Skills



Global Exposure



Incubation Centre



Centre of Excellence for  
AI, Robotics,  
CNC Machines,  
Ecological Farming



Centre of  
Excellence Labs



Scholarship Available  
for Meritorious Students





# RESEARCH AND INNOVATION

Research and Innovation have been adopted by Sanskriti University considering it as a core constituent of Higher Education. The University provides motivation to faculty members and infrastructural support for undertaking research on contemporary as well as interdisciplinary issues relevant to the Society and the Industry.

## IIIE Cell (Innovation, Incubation, Intellectual Property Rights, Entrepreneurship Cell)

The Idea is the most prized possession. Inculcating the innovative idea, nurturing the same for deriving commercial profit as well as to receive the full benefit of intellectual capital, creating sustainable growth for self, society and nation is the motto of the IIIE Cell of Sanskriti.

### Centre of Excellence

Sanskriti University has established three Centres of Excellence (CoE) in collaboration with MSME, PPDC, Agra.

- Centre of Excellence on Robotics & Automation
- Centre of Excellence on CNC Machines
- Centre of Excellence on Ecological Farming

The goal of the Centre of Excellence is to create new knowledge, techniques, innovations, standards and benchmarks in the particular field.

### Incubation Centre

“Transforming Ideas into Business Enterprises”

Sanskriti Incubation Centre provides a platform that encourages, supports and fosters technology and business ideas to transform lives and businesses.

### Research Papers and Patents

Aspiring to be amongst Top 5 Universities for filing maximum number of research publications and patents.

### The Researcher's Hub

The University will also extend benefits like free accommodation, lodging, allow usage of resources, etc. to all the researchers under the scheme. The idea is to facilitate the work of research and innovation.

## Startups

The University, besides making the students employable, encourages the students to become entrepreneurs and with this end in view extends helping hand for the upcoming startups allowing the students to grow and validate a scalable business model.

To lead from the front, Sanskriti University, in collaboration with Santhigiri, has promoted a startup –Sanskriti Medimix Pvt. Ltd. that deals with Distribution & Manufacturing of Ayurvedic Products.

The idea of creating something of their own attracts students to put their efforts into not just to make a profit, but also to make an impact.

## Startups



Manufacturing & Distribution of Ayurveda Products



RUDRA FITNESS CENTER



नारायणा आरिड कॅरियर सेन्टर  
(आरिड कॅरियर सेन्टर)

**10 startups more to come**

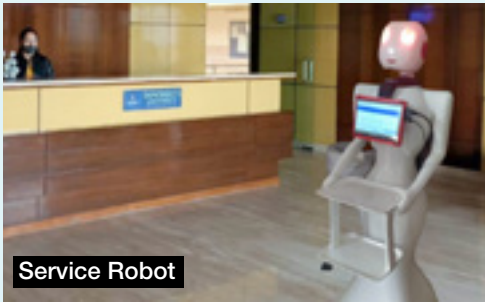
**More than 2200**  
**Research Papers Published**

**30** Patent Designs Filed

**More than 1150**  
**Patents filled**

**26** Patent Designs Registered

# FEW PROJECTS SHOWCASED BY OUR STUDENTS



**Service Robot**



**Bamboo Cycle**



**Automated Floor Cleaner**



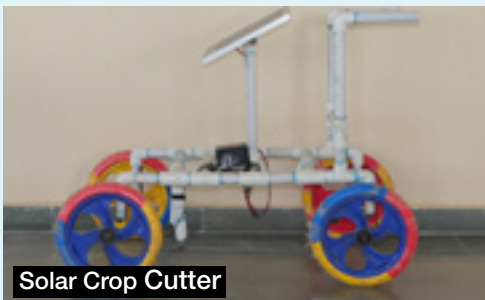
**Anti-Missile And Surveillance Robot**



**Solar Powdered Hydroponics System**



**Solar Diya**



**Solar Crop Cutter**



**Walk in Wheel**

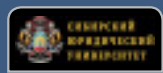
and many more...



## International Collaborations

Sanskriti University offers a wide spectrum of programmes that are recognized globally. Apart from undergraduate, postgraduate, and doctoral programmes, the University also provides Certificate and Polytechnic-Diploma level Programmes that impart skills, knowledge, competence & expertise. The quality education with ultra-modern facilities and equipment that the University offers is within the reach of every income-group considering the reasonable and rational Fee structure.

We welcome International students from countries like Ghana, Zambia, Afghanistan, Nigeria, Namibia, Nepal, Bhutan and other SAARC Countries. We have more than 25+ International Universities Tie-Ups for Student and Faculty Exchange Programmes.



Siberian Law University



Saylor Academy



Russian New University



Caucasus International University



UNIVERSIDAD SIGLO 21



CAMPUS cype



Australian National Institute of Mgmt. & Tech.



Infrastructure University Kuala Lumpur (IUKL)



IUBH University of Applied Sciences, Germany



Al Zaytoonah University



Euclid University



Bahir Dar University



International Skill Development Corporation



Colegio de abogadas de Cordoba, Argentina



Cambridge University Press India P Ltd



Synergy University



University of Fredrickson



EduClaas Pte. Ltd.



London Institute of skill development, UK (LISD)



Ghana Institute of Mgmt. and Public Administration

...and many more





## National Collaborations

National collaborations add multiple dimensions to the learning process at Sanskriti University. These collaborations are done with established global institutions which add to Sanskriti's capabilities and open many vistas of opportunities for the students.



MSME



Sri Aurobindo Society



Tata steel



UGC



Tribhuvan University



Indian Institute of Millets Research (IIMR)



ICAR-Indian Institute of Sugarcane Research, Lucknow



NIESBUD



Intellectual Property Intellect Services (IPIS)



MoU with Rubicon Skill Development Private Ltd.



Shodhganga



unschool



TCSiON  
...and many more

# COLLABORATIONS



# SANSKRITI A WORLD CLASS UNIVERSITY



# RANKINGS & AWARDS

Ranked **7<sup>th</sup>** in India  
with Highest number  
of Patent Applications



Ranked among **Top 30**  
Band - Performer,  
ARIIA Ranking 2021



Ranked **1<sup>st</sup>**  
School of Tourism  
& Hospitality (Best  
Value for Money) in  
private Colleges by  
**India Today**

Ranked **5<sup>th</sup>**  
School of Mgmt.  
& Commerce in  
Private Colleges in  
UP by  
**India Today**

Ranked among  
**Top 15**  
Universities in  
India by **India**  
**Today Aspire**

Awarded Excellence in  
**Student Diversity &**  
Recognition as the **Best Young**  
**University in infrastructure &**  
**Research by Hindustan**  
**Shiksha Shikhar Samman**



# INDUSTRY HONOR PROGRAMME IN COLLABORATION WITH



To leverage the learning, investments and experience in digital education and to create the largest pool of employable youth, Sanskriti University started various Industry Honored Programmes in collaboration with TCS ion with the use of phygital platforms; platforms that overlay digital technologies over physical assets.

## Specializations

B.Com (H), B.Com, BBA, MBA	• Financial Markets • Banking and Insurance • Business Analytics
B.Tech	• Artificial Intelligence & Machine Learning • Data Science

## Pedagogy

- Digital Lectures
- Tutorials
- Discussion Room to connect Industry with Academics
- Practice Assessment
- Industry Assignment
- Summative Assessment

## USPs

- 1.To deliver the curriculum via physical mode and Industry based on Industry's Current and futuristic requirements.
2. To provide Industry endorsed certification accepted and recognized by the University.
3. To connect the youth with the Industry for enhancing employability Quotient of our students.

## Highlights

1. On Successful completion of the course, TCS ion will provide the student with Verifiable Digital Certificate through which student can apply to any TCS company without giving NQT test.
2. Students will get a visibility to the internship opportunities across corporates.
3. Students will get a visibility to the Job opportunities from top corporate recruiters.



# SOCIAL OUTREACH



Sanskriti University celebrates National Science Day by organising Science Exhibition for Various Secondary Schools

Organised Free Medical Health Check-up camps



Organised free eye testing camps



Happiness Kit distributed to the differently abled students.

Conducted an Industrial Tour



Sanskriti University runs NSS



# STATE OF THE ART INFRASTRUCTURE





- Lush Green Campus
- Well-Equipped Laboratories
- Surveillance by CCTV
- Airy & Well-lit Classrooms
- Unique Architecture
- Home away from Home
- Wi-Fi enabled Campus
- Serene Atmosphere
- Solar Powered-  
Biodiverse Campus
- Incubation Centre

# CAMPUS

The Campus is like an article of faith at Sanskriti University. The colorful campus complements the intense academic environment in the classrooms which enhances the overall experience of the students. A walk across the length of the campus would present many different hues and colors such as a range of co-curricular activities and extra-curricular activities, students hanging out discussing life, studies, career, politics, sports, etc. Everyone gets exposure to a variety of social, cultural & intellectual, recreational opportunities. Such experiences enrich the lives of students and help them discover their full potential. Students learn the art of managing people, resources, and processes as well as handling uncertainties. The bouquet of facilities and services available on the campus lubricates the functioning of this very large machine and makes life easy for students living far from home.



## WORKSHOP

Workshops at the University have the latest machine tools, welding and fabrication facilities, foundry, etc. for students of various engineering branches. Students are encouraged to hone application skills and practically verify the theoretical aspects.

## LIBRARY

Libraries are well-equipped with a collection of more than 1 lakh books, journals & magazines. It has a multiple reading halls, a reprographic facility, and webinar capability.







## SCIENTIFIC LABORATORIES

The University has fully equipped labs that allow the students to experiment and practice the theoretical learning they have acquired in classrooms.

## HOSTELS

Separate AC/ Non-AC hostel for boys and girls with furnished rooms are available. Round the clock internet connectivity through Wi-Fi. Providing them nutritious food, RO safe drinking water, round-the-clock water supply, etc. gives the students a feeling of being at home.



## COMPUTER CENTRE

Sanskriti University has well equipped computer centres to cater the needs of the students and faculty members of the University. The laboratories possess adequate computer systems and supporting equipments with latest configurations.



## MEDICAL FACILITY

Sanskriti University has engaged Nayati Medicity, the leading hospital in this region, for looking after the medical needs on the campus.

## SPORTS

Sanskriti is endowed with playgrounds for various sports such as Cricket, Football, Volleyball, Basketball, Badminton, Table Tennis, Lawn Tennis as well as indoor games like Carrom, Flying Hockey, Pool and Chess etc.



## CAFETERIA

The University has a well-equipped and furnished cafeteria to ensure that students are provided healthy and hygienic food.

## SANSKRITI RADIO 91.2 FM

“Bindaas Bajao” is a new start-up by Sanskriti University. Sanskriti University’s community radio will be heard on 91.2 Fm and is fully managed by faculty and students, which gives them a perfect platform to present their creative talent.







## GYMNASIUM

A well-equipped air-conditioned Gym with the latest equipments and machines. Instructors and trainers are available for training gym enthusiasts. There are separate timings for boys and girls.

## SEMINAR HALL

Seminar Halls are equipped with the latest Audio-Visual facilities to facilitate guest lectures, seminars, presentations, and other academic activities.



## TRANSPORT

The University runs a fleet of buses for facilitating safe and convenient travel for students and staff. The transportation by deluxe buses facility is being provided within a radius of 50 KM of the campus.

## FACULTY MEMBERS

More than 300+ Academicians drawn from Industry and Academia form the intellectual capital of Sanskriti University.



# COURSES TO INSPIRE YOU

## School of Engineering & Information Technology

Name of the Programme		Minimum Duration	Annual Fee (₹)	Semester Fee (₹)
B.Tech -Computer Science & Engineering (Industry Honour Programme) •Artificial Intelligence & Machine Learning • Data Science		4 Years	1,30,000/-	67,000/-
B.Tech Cloud Technology & Cyber Security		4 Years	1,30,000/-	67,000/-
Eligibility	10+2 with minimum 60% marks in PCM			
B.Tech. in CS&E		4 Years	1,15,000/-	59,500/-
B.Tech. in CE			1,15,000/-	59,500/-
B.Tech. in ME			1,15,000/-	59,500/-
Eligibility	Passed 10+2 examination with Physics and Mathematics (as compulsory subjects) along with one of the following subjects: Chemistry/ Biotechnology/ Biology/ Technical Vocational Subject/ Computer Science/ Information Technology/ Informatics Practices/ Agriculture/ Engineering Graphics/ Business Studies obtained at least 45% marks in the above subjects taken together.			
B.Tech. in CS&E (Lateral Entry / Migration)		3 Years	1,15,000/-	59,500/-
B.Tech. in CE (Lateral Entry / Migration)			1,15,000/-	59,500/-
B.Tech. in ME (Lateral Entry / Migration)			1,15,000/-	59,500/-
Eligibility	Lateral Entry: Minimum 55% marks in 3 years Diploma recognized by Board of Technical Education in appropriate branch of Engineering/ B.Sc. (PCM) with minimum 60% marks in the above subjects taken together. Migration: Clear pass in B.Tech. first-year from a recognized University in the same discipline, subject to matching of courses.			
M.Tech. in Computer Science and Engineering		2 Years	60,000/-	32,000/-
M.Tech. in CE (Structural Engineering)			60,000/-	32,000/-
M.Tech. in Mechanical Engineering			60,000/-	32,000/-
Eligibility	B.Tech. with minimum 55% marks in the relevant branch or 60% in MCA for Computer Science & Engineering.			
Bachelor Computer Applications		3 Years	50,000/-	27,000/-
BCA Artificial Intelligence & Data Science		3 Years	75,000/-	39,500/-
BCA Cloud Technology & Cyber Security		3 Years	75,000/-	39,500/-
Eligibility	10+2 with Mathematics/ Computer Science/ Information Practices etc. with minimum 50% marks in best four subjects including the above subjects.			
Master in Computer Applications		2 Years	60,000/-	32,000/-
Eligibility	Passed BCA/ Bachelor Degree in Computer Science Engineering or equivalent Degree. OR passed B.Sc./ B.Com./ B.A. with Mathematics at 10+2 Level or at Graduation Level (with additional bridge Courses as per the norms of the concerned University). Obtained at least 50% marks (45% marks in case of candidates belonging to reserved category) in the qualifying Examination.			

School of Engineering & Information Technology			
Name of the Programme	Minimum Duration	Annual Fee (₹)	Semester Fee (₹)
Integrated Bachelor Computer Applications + Master in Computer Applications	5 Years	50,000/-	27,000/-
<b>Eligibility</b>	10+2 with Mathematics/Computer Science/Information Practices etc. with minimum 50% marks in best four subjects including the above subjects.		

University Polytechnic			
Name of the Programme	Minimum Duration	Annual Fee (₹)	Semester Fee (₹)
Diploma in Engineering in • CS&E • CE • EE • ME (Automobile / Production)	3 Years	42,000/-	23,000/-
<b>Eligibility</b>	10th with minimum 35% marks in aggregate.		
Lateral Entry in 2nd year of Diploma in Engineering After 10+2 in • CS&E • CE • EE • ME (Automobile / Production)	2 Years	45,000/-	24,500/-
<b>Eligibility</b>	10+2 with Science/ Mathematics/ Vocational subject or 10th + 2 Year ITI in appropriate Specialization with 50% marks.		

School of Management & Commerce			
Name of the Programme	Minimum Duration	Annual Fee (₹)	Semester Fee (₹)
BBA	3 Years	45,000/-	24,500/-
B.Com.	3 Years	30,000/-	17,000/-
BBA Entrepreneurship	3 Years	75,000/-	39,500/-
BBA International Business	3 Years	75,000/-	39,500/-
B.Com. (Hons.)	3 Years	45,000/-	24,500/-
BJMC	3 Years	75,000/-	39,500/-
<b>Eligibility</b>	10+2 with minimum 50% marks in best four relevant subjects.		
MBA in With Dual Specialization in any two of below: • Human Resource • Finance • International Business • Marketing Management • Hospital & Health Care • Hospitality & Tourism	2 Years	1,15,000/-	59,500/-
<b>Eligibility</b>	Bachelor's Degree (any discipline) with 50% marks in aggregate. Preference will be given to candidates who qualified CAT/ MAT/ XAT/ NMAT with good score.		
Integrated BBA+MBA	5 Years	50,000/-	27,000/-
<b>Eligibility</b>	10+2 with minimum 50% marks in best four relevant subjects.		

School of Tourism & Hospitality			
Name of the Programme	Minimum Duration	Annual Fee (₹)	Semester Fee (₹)
B.Sc. in Hotel Management	3 Years	60,000/-	32,000/-
<b>Eligibility</b>	10+2 with minimum 50% marks in best four subjects.		

School of Rehabilitation (Approved by RCI)				
Name of the Programme		Minimum Duration	Annual Fee (₹)	Semester Fee (₹)
B.Ed. (Spl. Edu.) in LD • MR (IOD) • HI		2 Years	60,000/-	32,000/-
Eligibility	Candidates with at least 50% marks either in the Bachelor's degree and/ or in the Master degree in Sciences/ Social Sciences/ Humanities/ Bachelors in Engineering or Technology with Specialization in Science and Mathematics with 55% marks or any other qualification equivalent, are eligible for admission to the programme. (As per RCI Norms)			
D.Ed. (Spl. Edu.) in • CP • ASD • MR • VI		2 Years	-	-
Eligibility	10+2 with minimum 50% marks. (As per RCI Norms)			

School of Education				
Name of the Programme		Minimum Duration	Annual Fee (₹)	Semester Fee (₹)
BA B.Ed./B.Sc. B.Ed.		4 Years	40,000/-	22,000/-
Eligibility	10+2 with at least 50% aggregate marks in Humanities/ Science			
B.Ed.		2 Years	60,000/-	32,000/-
Eligibility	Graduation in any stream with minimum 50% marks in aggregate.			
D.EL.Ed.		2 Years	-	-
Eligibility	Graduation in any stream with minimum 50% marks in aggregate. (Through state Govt. Counselling)			
B.El.Ed.		4 Years	40,000/-	22,000/-
Eligibility	10+2 in any stream with minimum 50% marks in aggregate.			
M.Ed.		2 Years	50,000/-	27,000/-
Eligibility	B.Ed. with 50% marks in aggregate or equivalent.			

School of Fashion Designing				
Name of the Programme		Minimum Duration	Annual Fee (₹)	Semester Fee (₹)
Diploma in Fashion Designing		3 Years	42,000/-	23,000/-
Eligibility	10th with minimum 50% marks in aggregate.			
Lateral Entry in 2nd year of Diploma After 10+2 in Fashion Designing		2 Years	45,000/-	24,500/-
Eligibility	10+2 with minimum 50% marks in best four subjects.			
B.A. in Fashion Designing		3 Years	50,000/-	27,000/-
Eligibility	10+2 with minimum 50% marks in best four subjects.			

School of Law & Legal Studies (Approved by BCI)				
Name of the Programme		Minimum Duration	Annual Fee (₹)	Semester Fee (₹)
BA LLB (Hons.) in Law		5 Years	60,000/-	32,000/-
B.Com LLB (Hons.) in Law		5 Years	60,000/-	32,000/-
Eligibility	10+2 with minimum 45% marks in Aggregate.			

School of Humanities & Social Science				
Name of the Programme		Minimum Duration	Annual Fee (₹)	Semester Fee (₹)
B.A. in Psychology (Hons.)		3 Years	30,000/-	17,000/-
Eligibility	Minimum 50% in best of four subjects in 10+2 (Senior Secondary) from any of the recognized Central or State boards in India or equivalent from abroad.			

School of Basic & Applied Sciences				
Name of the Programme		Minimum Duration	Annual Fee (₹)	Semester Fee (₹)
B.Sc. in Biotech		3 Years	45,000/-	24,500/-
Eligibility	10+2 or equivalent with Agriculture/ Biology/ Biotechnology/ PCM with minimum 50% marks in best four including the relevant subjects.			
B.Sc. in Forensic Science		3 Years	70,000/-	37,000/-
Eligibility	Pass with 60% aggregate marks in 10+2 with English, Physics, Chemistry and Mathematics/ Biology/ Biotechnology or equivalent subject.			
M.Sc. in Biotech, Industrial Chemistry		2 Years	30,000/-	17,000/-
Eligibility	Graduation in Science with minimum 50% marks in aggregate with relevant subject.			

Sanskriti Ayurvedic Medical College & Hospital				
Name of the Programme		Minimum Duration	Annual Fee (₹)	Semester Fee (₹)
BAMS (Ayurvedic Medicine & Surgery)		5.6 Years (100 Seats)	-	-
Eligibility	10+2 examination with Physics, Chemistry & Biology as compulsory subjects, having obtained minimum 50% marks in the above subjects taken together. (As per Council/ Ayush/ NEET/ CET/ CPAT norms.)			
M.Sc in Ayurveda Physiology		2 Years		
M.Sc in Ayurveda Anatomy		2 Years		
Eligibility	As per NSCIM/UGC Norms.			

School of Pharmacy (Approved by PCI)				
Name of the Programme		Minimum Duration	Annual Fee (₹)	Semester Fee (₹)
B.Pharm. (Pharmacy)		4 Years	1,00,000/-	52,000/-
Eligibility	10th with minimum Passed 10+2 examination with English as one of the subjects and PCM and/or PCB/ PCMB as optional subjects individually. (As per PCI norms) 50% marks in aggregate.			
B.Pharm. Lateral Entry (Pharmacy)		3 Years	1,10,000/-	57,000/-
Eligibility	Pass in D.Pharm. Course from an Institution approved by PCI under section 12 of the Pharmacy Act. (As per PCI norms)			
D. Pharm. (Pharmacy)		1 Year	1,25,000/-	64,500/-
Eligibility	As per PCI norms.			



## School of Agriculture

Name of the Programme	Minimum Duration	Annual Fee (₹)	Semester Fee (₹)
B.Sc. (Hons) in Agriculture	4 Years	67,000/-	35,500/-
<b>Eligibility</b>	12th with minimum 50% marks in aggregate.		
M.Sc. in Agriculture (Agronomy)	2 Years	50,000/-	27,000/-
<b>Eligibility</b>	Graduate in relevant subject with minimum 50% marks in aggregate.		

## School of Medical & Allied Sciences

Name of the Programme	Minimum Duration	Annual Fee (₹)	Semester Fee (₹)
Diploma in Medical Lab Technology	3 Years	50,000/-	27,000/-
<b>Eligibility</b>	10th with minimum 50% marks in aggregate.		
Diploma in Medical Lab Technology	2 Years	50,000/-	27,000/-
<b>Eligibility</b>	10+2 examination with Physics, Chemistry & Biology as compulsory subjects, having obtained minimum 50% marks in the above subjects taken together.		
BPT (Physiotherapy)	4.6 Years (including 6 months Internship)	75,000/-	39,500/-
<b>Eligibility</b>	10+2 with Physics, Chemistry & Biology as compulsory subjects having obtained minimum 50% marks in the above subjects taken together.		
B.Sc. (MLT) Medical Lab Technology	3 Years	60,000/-	32,000/-
<b>Eligibility</b>	10+2 with Physics, Chemistry & Biology as compulsory subjects, having obtained minimum 50% marks in the above subjects taken together.		
Bachelor of Optometry (B.Optom.)	4 Years	60,000/-	32,000/-
<b>Eligibility</b>	10+2 with Physics, Chemistry & Biology/ Mathematics as compulsory subjects, having obtained minimum 50% marks in the above subjects taken together.		
B.Sc. Cardiovascular Technology	3 Years	60,000/-	32,000/-
<b>Eligibility</b>	10+2 with Physics, Chemistry & Biology as compulsory subjects, having obtained minimum 50% marks in the above subjects taken together.		
MPT • Orthopedics • Sports • Neurology • Pediatrics	3 Years	50,000/-	27,000/-
<b>Eligibility</b>	BPT with minimum 50% marks in aggregate and completion of compulsory internship of 6 months.		
Diploma in OT	2 Years	60,000/-	-
<b>Eligibility</b>	10+2 with Physics. Chemistry, Biology. Mathematics.		
Diploma in X-Ray Technician	2 Years	60,000/-	-
<b>Eligibility</b>	10+2 with a minimum of 50% marks from Science stream and from a recognized board, college or university		
BSc in Public Health and Hospital	3 Years	80,000/-	-
<b>Eligibility</b>	10+2 in any stream such as Science. Commerce Arts and Humanities		

School of Yoga & Naturopathy			
Name of the Programme	Minimum Duration	Annual Fee (₹)	Semester Fee (₹)
BNYS (Naturopathy and Yogic Sciences)	5.6 Years	1,00,000/-	52,000/-
<b>Eligibility</b>	10+2 with Physics, Chemistry & Biology as compulsory subjects, having obtained minimum 50% marks in the above subjects taken together.		
Post Graduate Diploma (Yoga and Naturopathy)	1 Year (including 6 months Internship)	24,000/-	14,000/-
<b>Eligibility</b>	Graduate in any stream with minimum 45% marks in aggregate.		
B.Sc. (Yoga and Naturopathy)	3 Years	24,000/-	22,000/-
<b>Eligibility</b>	10+2 with Science with Minimum 50% marks in aggregate.		

School of Nursing			
Name of the Programme	Minimum Duration	Annual Fee (₹)	Semester Fee (₹)
B.Sc. (Nursing)	4 Years	1,25,000/-	-
<b>Eligibility</b>	Candidate must pass the 12th or equivalent exam with PCB and English from a recognized board. Minimum Marks: Candidates must pass the qualifying exam with 55% for General/OBC (50% for SC/ST candidates). Age Criteria: Must be 17 years as on 31 December 2020.		

Fee Ph.D. Programme					
Fee Part-Time					
S.No	Fee Heads	1st Year	2nd Year	3rd Year	4th Year
1	Registration Fee	10000/-	-	-	-
2	Tuition Fee	85000/-	85000/-	85000/-	20000/-
3	Thesis Submission	-	-	-	25000/-
	Total	95000/-	95000/-	95000/-	45000/-

Ph.D. Programme				
Fee Full-Time				
S.No	Fee Heads	1st Year	2nd Year	3rd Year
1	Registration Fee	10000/-	-	-
2	Tuition Fee	85000/-	85000/-	85000/-
3	Thesis Submission	-	-	25000/-
	Total	95000/-	95000/-	110000/-

# HOSTEL CHARGES

AC Room	Annual Fee	Semester Fee
2 seater	1,44,500/-	63,750/-
3 seater	1,18,500/-	51,250/-

Non AC Room	Annual Fee	Semester Fee
2 seater	1,05,000/-	43,750/-
3 seater	85,000/-	35,250/-



# OTHER CHARGES

- Caution money Fee of ₹ 5000/- in the first year of the programme (to be paid once and will be refunded after the completion of the course).
- Examination form Fees at the rate of ₹ 250/- / ₹ 500/- for programme having Semester wise/ Yearly wise exams.
- Hostel Security in the first year of the course ₹ 5,000/- for AC Room & ₹ 2,000/- for Non -AC Room (refundable on the vacation of the hostel on successful completion of the course).
- Sanskriti Youth Club Fees per annum ₹ 1,000/- for all students.
- Alumni Association fee charged in the final year only ₹ 1,000/-.
- Convocation Fee 1500/- to be paid at the registration for convocation.
- TBA Medical Insurance Fee extra.

## Note:

- Rooms in the hostel will be allotted on a first-come-first-serve basis.
- UGC Norms will be adhered for fee refund.
- In respect of AC Accommodation in the hostel, electricity consumption beyond specified limits is chargeable.
- Students staying back during vacations have to pay hostel rent @ ₹ 5,000/- per month (without Mess).
- The fee for Hostel is subject to change, as and when required.
- The Hostel fee once paid is non-refundable. No refund will be considered even in case of students vacating the hostel during the middle of the academic year.



The rooms are spacious and have the necessary furniture for students to study and relax.



AC and non AC rooms are available for both boys and girls.



24x7

All the hostels have a 24X7 power back up facility, so students never have to compromise on security and their comfort.



Strict discipline is maintained at all times. Students are not allowed to leave the hostel without prior permission.

# SCHOLARSHIP SCHEMES

The University offers scholarship to meritorious students on the basis of marks/ CGPA obtained by them in the qualifying examinations as per the following scale:

Bachelor of Technology (B.Tech.)		
S. No.	% of Marks in 12th (PCM only)	Scholarship % on 1st year tuition fee
1	90.00 and above	90%
2	85.00-89.99	70%
3	80.00-84.99	50%
4	75.00-79.99	35%
5	70.00-74.99	25%

Master of Technology (M.Tech)		
S. No.	Criteria	Scholarship % on 1st Year Tuition Fee Only
1	Gate Qualified (for full time students only)	80%

## Terms & Conditions:-

- 1) Student has to put up the Gate score card for availing the scholarship.

B.A LLB (Hons.) / B.Com LLB (Hons.)		
S. No.	% of Marks in 12th	Scholarship % on Tuition Fee
1	90 .00 and above	50%
2	85.00-89.99	30%
3	80.00-84.99	25%
4	75.00-79.99	20%
5	70.00-74.99	10%

Master of Business Administration (MBA)			
S. No.	MAT Percentile	CAT Percentile	Scholarship % on 1st year tuition Fee
1	99.00 and above	95.00 and above	95%
2	95.00-98.99	90.00-94.99	90%
3	85.00-94.99	80.00-89.99	50%
4	70.00-84.99	55.00 to 79.99	20%

Girls Quota			
S. No.	Scheme	Scholarship % on 1st-year tuition fee	Eligibility
1	Girls	10% (T & C apply)	20% (Transport fee waive for Local girl students only for all the years/ semesters).

Defence Quota			
S. No.	Scheme	Scholarship % on 1st-year tuition fee	Eligibility
1	Defence	20%	Parents from defence quota, have to show the defence card.

Physically Disability			
S. No.	Scheme	Scholarship % on 1st-year tuition fee	Eligibility
1	Disability	10%	Physically Handicapped student eligible for availing this scheme need to show medical proof from competent govt. medical authority.

Champion (Existing Student)			
S. No.	Scheme	Scholarship % on 1st-year tuition fee	Eligibility
1	SU-Existing Student	25%	Existing student who have successfully completed the qualifying examination from Sanskriti University. Eligible for admission in any course.



Sports			
S. No.	Sports Level	Scholarship % on 1st year tuition fee	Eligibility
1	International Level	75%	Provided on the basis of Medal, performance in sports.
2	National Level	50%	
3	State Level	25%	
4	District Level	10%	

Aptitude Test		
S. No.	Criteria	Scholarship % on 1st-year tuition fee
1	1st winner	25%
2	2nd winner	20%
3	3rd winner	15%

Chancellor's Scholarship After (10+2) Scholarship After 10+2 (UG Programmes)		
S. No.	% of Marks in 12th Class (Or Equivalent)	Scholarship% on 1st year tuition Fee
1	75%-80.99%	10%
2	81%-85.99%	25%
3	86%-90.99%	50%
4	91% and above	100%

Chancellor's Scholarship After (For Subsequent Years Only) Scholarship for Subsequent Years		
S. No.	Scholarship for Subsequent Year	Scholarship % on subsequent year's tuition fee
1	8.6-8.8 CGPA	20%
2	8.81-9.0 CGPA	40%
3	9.01-9.29 CGPA	50%
4	9.3 CGPA & Above	100%

#### Terms & Conditions:-

- 1) The annual income certificate of parent or guardian should be 3 Lakhs Per Annum or below.
- 2) Only one Scholarship will be available at a time.
- 3) This Scholarship is subject to all terms & conditions mentioned on the website.
- 4) The above mentioned scholarship is not applicable on Education, Special Education, BAMS, Nursing & Pharmacy Programmes.

#### Terms & Conditions:-

- 1) Candidate should have passed in all the subjects without any carry over.
- 2) Minimum 85% attendance required for subsequent year's scholarship.
- 3) The Annual Income certificate of Parent or Guardian should be 3 Lakhs Per Annum or below.
- 4) The student should not be involved in any activity of indiscipline.
- 5) Only one scholarship scheme is available at one time.
- 6) This scholarship is subject to all terms and conditions mentioned on the website.
- 7) Above mentioned scholarship is not available on Education, Special Education, BAMS, Nursing & Pharmacy.

#### Note:

- At One time, Only ONE Scholarship Scheme will be Applicable for Admission.
- The student will have to maintain a minimum performance as prescribed by the University every year, without any back papers to avail the continuation of scholarship and its percentage.
- Academic performance of a student shall be the sole criterion for the continuation of Scholarship. Scholarships starting from the highest slab shall be granted based on the position in the merit list prepared school-wise. The Scholarship criteria may change every academic year.

- Scholarships will be awarded on tuition fees only (Foreign tour charges shall not be included in Scholarship).
- If any student gets a scholarship internally at the Sanskriti University level, he/she will not be allowed to avail of any kind of Scholarship either from State Government or Central Government. If he/she do so, the Scholarship received shall be withdrawn.
- University Reserves the right to change or withdraw the scholarship scheme on year to year basis. All these schemes are excluded for admission in BAMS, B.Sc Nursing, Pharmacy and Ph.D. courses.

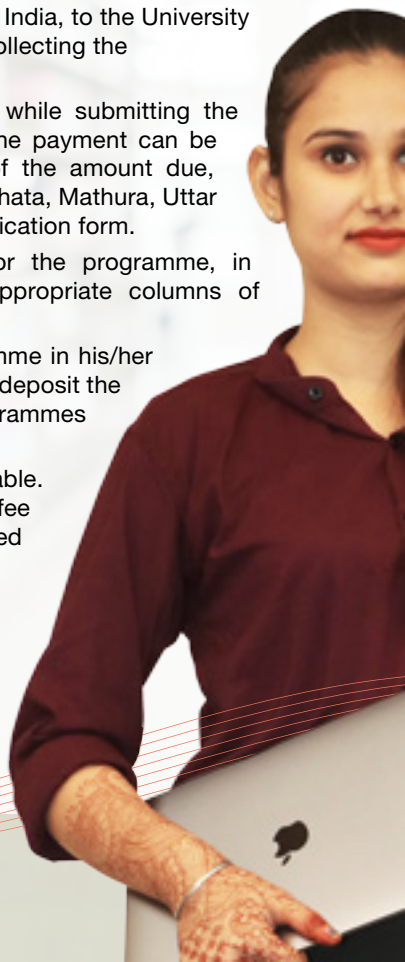
# ADMISSION PROCEDURE


## Application Submission Procedure

1. Candidate intending to apply should first check his/her eligibility as per the eligibility conditions laid down for each programme.
2. Depending upon his/her eligibility, he/she will submit the Application Form in the prescribed format.
3. The submission of the Application Form can be done online or in-person:
  - For Online Submission: He/She will have to register online.
  - For Offline Submission: He/She can download the application form and deposit the duly filled up form along with the registration fee at the following places:
    - a. University Campus: 28 K. M. Stone, Mathura-Delhi Highway, Chhata, Mathura (U.P.), India
    - b. Candidate can also collect the Application form & Prospectus @ ₹ 1,000/- from the University Campus or from the Regional Offices.
    - c. Candidate can also send a request by post, within India, to the University Campus along with a Bank Draft of ₹ 1,050/- for collecting the Application Form along with Prospectus.
4. Registration Fee of ₹ 10,000/-, is to be submitted while submitting the application form. In case of online submission, online payment can be made. In case of offline submission, Bank Draft of the amount due, made in favour of 'Sanskriti University', Payable at Chhata, Mathura, Uttar Pradesh, is to be submitted along with duly filled application form.
5. Candidate will have to give his/her preference for the programme, in which he/she wants to seek admission in the appropriate columns of the application form.
6. In case the candidate opt for more than one programme in his/her preference in the application form, he/she will have to deposit the higher registration fees as applicable, out of the programmes opted in the preference list.
7. The Registration Fees once deposited is non-refundable. The fees shall, however, be adjusted against the total fee to be deposited for the programme, if he/she is offered admission.

## Admission Offer Procedure

1. The candidate registered for a particular programme, after being examined of his/her eligibility, based on his merit and availability of seats, shall be sent an offer letter.



- 
2. Candidate will normally be given 15 days time to deposit the first installment of fees.
  3. Candidate will be required to report for depositing the first installment at any of the following places:
    - At the University Campus.
    - Or online.
  4. Candidate at the time of reporting should bring the following documents:-
    - A Bank Draft of the amount indicated in the offer letter as the first installment.
    - \*Admission Form (Hard Copy) duly filled in & signed by the Candidate & Parent.
    - Proof of Date of Birth.
    - Certificate and Mark sheet of 10th & 12th Examination.
    - Certificate and Mark sheet of Graduation/Post Graduation, if applicable.
    - Migration/Transfer Certificate.
    - Conduct and Character Certificate from Head of the Institution from where the student passed the qualifying exam.
    - Medical Fitness Certificate to be signed by a Registered Medical Practitioner holding a degree not lower than MBBS or equivalent.
    - Aadhaar Card.
    - All Original documents for verification & three sets of Photocopies of all the above-mentioned documents.
    - Color Passport Size Photos - Applicant (6)
    - Color Passport Size Photos - Parent (04)
    - An \*undertaking on the prescribed form attached with the Prospectus, in case the result of the qualifying examination has not been declared, duly signed by the Applicant & Parent.

5. On submission of the first installment of fees and verification of documents in regard to the fulfillment of eligibility conditions, the student will be given Provisional Admission in the programme.
6. Candidate will be subsequently advised to report to the University on the day of commencement of the session for orientation, programme/course registration.
7. Candidate will be required to deposit the balance fees before being allowed to attend classes.
8. Candidate at the time of Course registration will bring Anti-ragging undertaking signed by him/her and the Parent. The formats of undertakings have to be downloaded from the website [www.antiragging.in](http://www.antiragging.in)

Note: \*Admission Forms & Undertaking are also available on the website. Hard copies, duly filled in are to be submitted.

# PLACEMENT CELL

Sanskriti is committed to providing quality placement to all eligible final year students of different programmes. The University is focused on “employability” of its students and it is taking necessary steps for grooming the students in a manner that makes students industry-ready. Sanskriti’s student are very well received in the industry. Companies associated with Sanskriti to hire fresh graduates have expressed their satisfaction and complimented the University for imparting relevant skill sets to the students. Sanskriti has placed about 91% of its students with reputed companies.

## 91%

Students  
Placed

## 54 Lakhs

Highest Package

## 4.80 Lakhs

Average Package  
offered by  
150+ Companies

## 150+

Companies  
visited campus  
for placement

 **Narayana Health**  
HEALTHCARE & WELLNESS

 **studyroom**

 **BYJU'S**  
The Learning App

 **Microsoft**

 **TCS** | **TATA**  
CONSULTANCY SERVICES

**AEGIS** 

 **HDFC BANK**

 **wipro**

**Infosys**  
POWERED BY INTELLECT  
DRIVEN BY VALUES

 **Radisson**  
HOTELS & RESORTS

 **LARSEN & TOUBRO**

**Vedantu**  
LIVE ONLINE TUTORING

**FedEx**  
Express

**ORACLE**

**paytm**

**TAJ**  
GROUP

 **SARVODAYA**  
HOSPITALS

**PATANJALI**

 **Pidilite**

**THE LaLIT**  
Limitless hospitality

**accenture**

 **BAJAJ**  
**BAJAJ AUTO LTD.**

 **Marriott**

 **Park Plaza**  
Hotels & Resorts



# FEW FINEST GEMS



**Jai Prakash**  
M.sc biotech  
Sr. Quality Assurance  
Executive at Coca-Cola



**Sushmita Roy**  
B.Sc Biotech  
India Mart, New Delhi



**Abhishek Pratap Rudi**  
Diploma M.E.  
HPCL Rifornary, Badmer Raj.



**Ajay Chonkar**  
MBA  
HR. Executive H.G. Infra



**Digamber Singh**  
B-Tech. (CSE)  
Tata Consultancy Services  
New Delhi



**Vineet Sharma**  
B.Sc HM  
Hotel Radission Blue



**Roshni Verma**  
MBA  
K2 Cloud



**Lalit Kumar**  
B.Sc. (HM)  
The Leela Palace, Jaipur



**Sheenu Agrawal**  
MBA  
Authridge Research  
Services



**Mohd Kasim**  
Diploma (ME)  
Eabralalam Benghazi.Co.,  
Libya, North Africa



**Mohan**  
B.Sc. (HM)  
Emirates International  
Restaurant, Chilli's Dubai



**Sujit Kumar Mandal**  
Diploma (EE)  
Winner Liquors Udhvyog  
Pvt. Ltd. Nepal



**Mohit**  
B. Com. (H)  
HTIS Telecom Pvt. Ltd



**Shivangi Sharma**  
M. Sc (Biotech)  
Coca Cola



**Ankit**  
B.Tech (CS&E)  
Daiichi Kogyo India P. Ltd.



**Ashish Chaurasiya**  
Diploma (CE)  
NHAI





Himesh Reshammiya



Shahrukh Khan & Alia Bhatt



Singer Dev Negi

## CELEBRITY @ SANSKRITI



Singer Ragini Tandon



Comedian Ahsaan Qureshi



Motivational Speaker Sandeep Maheshwari



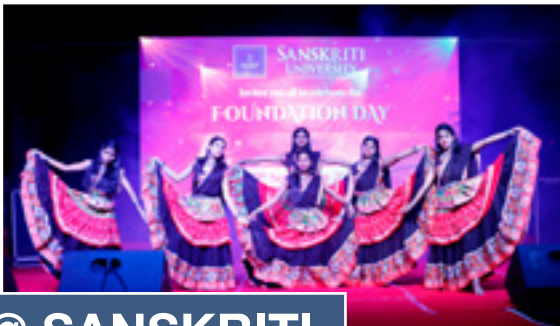
Sabri Brothers



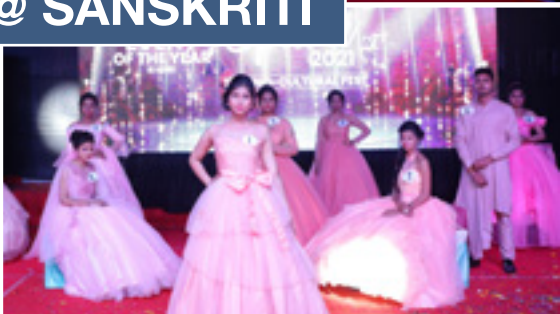
Mr. World Rohit Khandelwal



Dr. Ramesh Pokhriyal 'Nishank' Ji



## CELEBRITY @ SANSKRITI





# COMMUNITY RADIO



**RADIO 91.2 FM**  
**“BINDASS BAJAO”**



**SANSKRITI  
WELLNESS  
CENTRE**

**A Unit of Sanskriti Ayurvedic Medical  
College & Hospital**



[illegible]





📍 **Campus:** 28 K. M. Stone, Mathura – Delhi Highway,  
Chhata, Mathura, Uttar Pradesh (INDIA)

📞 9690899944 ✉️ [enquiry@sanskriti.edu.in](mailto:enquiry@sanskriti.edu.in)

📱 **9358512345, 9359688848**

📱 **Toll Free Number: 1800 120 2880**

🌐 **[sanskriti.edu.in](http://sanskriti.edu.in)**



Scan QR code to visit website