



**SANSKRITI  
UNIVERSITY**  
FOR EXCELLENCE IN LIFE

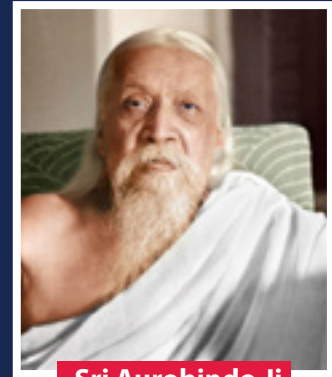
# SANSKRITI UNIVERSITY

[www.sanskriti.edu.in](http://www.sanskriti.edu.in)

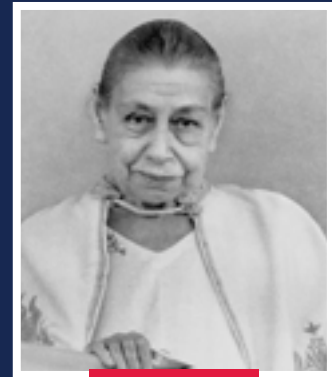
# TIE-UP OF SANSKRITI UNIVERSITY WITH SRI AUROBINDO FOUNDATION FOR INDIAN CULTURE (SAFIC) A WING OF SRI AUROBINDO SOCIETY, PUDUCHERRY

**S**ri Aurobindo Foundation for Indian Culture (SAFIC), a unit of the Sri Aurobindo Society, is dedicated to the exploration of various aspects of Indian culture including dance, drama, architecture, sculpture and music. The research undertaken here offers deep insights into the Indian scriptures and unraveling the hidden wonders and the soul of the Sanskrit language – our glorious inheritance from the days of yore. SAFIC strives to rediscover the genius and outstanding magnificence of Indian culture and works to apply it dynamically to life and all its activities in modern India. It aspires to evoke among the youth a great love for India, pride in their heritage and aspiration and will to create an even greater future.

Sri Aurobindo Foundation for Indian Culture under the aegis of Sri Aurobindo Society is working collaboratively with Sanskriti University in the process of curriculum development, academic delivery, research exchange programs and allied areas and assisting the University in offering certificate, diploma, under-graduate and post-graduate programs in Indian Culture. The Faculty members have been fully trained to impart the teachings as well as the teaching methodology to be adopted. Sanskriti University is the only University in the area offering courses in Indian culture, which is purposefully assisted by SAFIC. These courses will go a long way in making the students aware of the glory of Indian culture.




**Sri Aurobindo Ji**



**The Mother**

# ABOUT THE UNIVERSITY



**S**pread over an expansive area of more than 40 acres on Mathura-Delhi Highway, Sanskriti University, Mathura is proud of its state-of-the-art infrastructure and architectural excellence. The University has been established with the idea of bringing “Excellence in Life” to the students.

Students can choose from a wide array of programs such as Engineering, Hotel Management, Management, Commerce, Science, Pharmacy, Paramedical, Indian Medicine, Education, Nursing, Yoga & Naturopathy, Fashion Designing, Agriculture etc. Gone are the days when students used to choose just the mainstream fields to pursue their higher studies. Today they want to explore new horizons and that’s exactly what we encourage at Sanskriti University.

The students get additional learning through dedicated and well-equipped laboratories, field/industrial visits, co-curricular activities, etc. The focus is on igniting the young minds to have critical thinking so that they innovate and focus on Research-based projects.

At Sanskriti University, we have the best intellectual capital as the faculty are highly qualified, passionate and dedicated. The faculty members bring with them a perfect amalgamation of competence, experience and expertise to make sure that students get to the pinnacle of success. Sanskriti has generated an environment that fosters technology incubation and leads to effective R&D.

Sanskriti University believes in value-based education which helps students become a better person and do something constructive for the society. Sanskriti University is committed to the cause of delivering world-class education and its efforts have resulted in getting lot of accolades and top rankings from various organisations.

# DISTINGUISHED VISITORS

**B**esides having an illustrious Advisory Board, Sanskriti University has been blessed by regular visits of highly placed dignitaries of very renowned personalities, to name a few:



His Excellency Late Dr. A.P.J. Abdul Kalam Ji



Hon'ble Mr. Dipak Misra Ji,  
Former Chief Justice of India



Hon'ble First Secretary- Embassy of the  
Republic of Niger- Moustafa Aboubacar Diori



Indian Cricketer and IPL 2010 Winner Team  
Mumbai Indians Player Chetnya Nanda Ji



Mr. John. R. Vanderkolk, Indiana State  
Police Lab, U.S.A.



Air Chief Marshal (Retd.) Sh. N.C. Suri Ji



Mayor Sergio Favot, Argentina



Justice Gyan Sudha Misra Ji



Professor Emeritus University of Kansas,  
Prof. Rajendra P. Srivastava Ji

# **SANSKRITI UNIVERSITY**

## **AN INSPIRING PLACE TO STUDY**

**“ State of the Art  
Infrastructure ”**

**“ Cosmopolitan  
Culture ”**

**“ Top  
Academicsians ”**

**“ Premium  
Placements ”**

**“ Centre of  
Excellence for  
AI, ROBOTICS,  
CNC MACHINES,  
ECOLOGICAL  
FARMING ”**

**“ Scholarship  
Available for  
Meritorious  
Students ”**

**“ Research &  
Innovation ”**

**“ Centre of  
Excellence Labs ”**

**“ Life Learning  
Skills ”**

**“ Global Exposure ”**

**“ Incubation Centre ”**



# RESEARCH AND INNOVATION

Research and Innovation have been adopted by Sanskriti University considering it as a core constituent of Higher Education. The University provides motivation to faculty members and infrastructural support for undertaking research on contemporary as well as interdisciplinary issues relevant to the Society and the Industry.

## IIIE Cell (Innovation, Incubation, Intellectual Property Rights, Entrepreneurship Cell)

**The Idea is the most prized possession.** Inculcating the innovative idea, nurturing the same for deriving commercial profit as well as to receive the full benefit of intellectual capital, creating sustainable growth for self, society and nation is the motto of the IIIE Cell of Sanskriti.

## Centre of Excellence

To keep pace with the technological advancement of the Developed world, Sanskriti University has established three Centres of Excellence (CoE) in collaboration with MSME, PPDC, Agra.

- **Centre of Excellence on Robotics & Automation**
- **Centre of Excellence on CNC Machines**
- **Centre of Excellence on Ecological Farming**

The goal of the Centre of Excellence is to create new knowledge, techniques, innovations, standards and benchmarks in the particular field.

## Incubation Centre

### "Transforming Ideas into Business Enterprises"

Sanskriti Incubation Centre provides a platform that encourages, supports and fosters technology and business ideas to transform lives and businesses.

## Research Papers and Patents

Aspiring to be amongst **Top 5** Universities for filing maximum number of research publications and patents.

## The Researcher's Hub

The University will also extend benefits like free accommodation, lodging, allow usage of resources, etc. to all the researchers under the scheme. The idea is to facilitate the work of research and innovation.

## Startups

The University, besides making the students employable, encourages the students to become entrepreneurs and with this end in view extends helping hand for the upcoming startups allowing the students to grow and validate a scalable business model.

To lead from the front, Sanskriti University, in collaboration with Santhigiri, has promoted a startup –Sanskriti Medimix Pvt. Ltd. that deals with Distribution & Manufacturing of Ayurvedic Products.

The idea of creating something of their own attracts students to put their efforts into not just to make a profit, but also to make an impact.

## Startups



Manufacturing & Distribution  
of Ayurveda Products



# PROJECTS SHOWCASE OF OUR STUDENTS



SERVICE ROBOT



ANTI-MISSILE AND SURVEILLANCE ROBOT



BAMBOO CYCLE



SCULPTURE BY SCHOOL OF FASHION



SOLAR DIYA

# COLLABORATIONS

## International Collaborations

**S**

anskriti University offers a wide spectrum of programs that are recognized globally. Apart from undergraduate, postgraduate, and doctoral programs, the University also provides Certificate and Polytechnic-Diploma level Programs that impart skills, knowledge, competence & expertise. The quality education with ultra-modern facilities and equipment that the University offers is within the reach of every income-group considering the reasonable and rational Fee structure.

We welcome International students from countries like Ghana, Zambia, Afghanistan, Nigeria, Namibia, Nepal, Bhutan and other SAARC Countries. We have more than 25+ International Universities Tie-Ups for Student and Faculty Exchange Programs.

## National Collaborations

**N**

ational collaborations add multiple dimensions to the learning process at Sanskriti University. These collaborations are done with established global institutions which add to Sanskriti's capabilities and open many vistas of opportunities for the students.





Siberian Law University



International Business School



Philippine Women  
University, Philippines



Russian New  
University, Russia



Caucasus International  
University



Al-Zaytoonah  
University of Jordan



Universidad Abierta  
Interamericana, Argentina



Infrastructure University  
Kuala Lumpur (IU KL)



Lincoln University  
College, Malaysia



Universidad Villa Maria,  
Argentina



University of California  
Riverside, USA



Australian National  
Institute Of Management  
and Technology – Australia



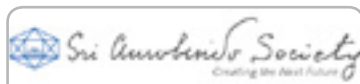
Universidad Siglo 21



Bahir Dar University



MSME



Sri Aurobindo Society



Santhigiri Ashram



Nayati Medicity



Indian Institute of Millets  
Research (IIMR)



ICAR- NBPGR,  
Government of India



NIESBUD



unschool



Shodhganga



# SANSKRITI A WORLD CLASS UNIVERSITY



# RANKINGS & AWARDS

Ranked **1<sup>st</sup>**  
School of Tourism  
& Hospitality  
(Best Value for  
Money) in private  
Colleges by  
**India Today**

Ranked **5<sup>th</sup>**  
School of Engg.  
& IT in UP among  
110 Top Privates  
Engineering  
Colleges by  
**Outlook**

Ranked **6<sup>th</sup>**  
School of Engg.  
& IT in Private  
Colleges in UP by  
**India Today**

Awarded  
Excellence  
in **Student  
Diversity** &  
Recognition as  
the **Best Young  
University in  
infrastructure  
& Research**  
by **Hindustan  
Shiksha  
Shikhar  
Samman**

Ranked **5<sup>th</sup>**  
School of Mgmt.  
& Commerce in  
Private Colleges  
in UP by  
**India Today**

Ranked **6<sup>th</sup>**  
School of Mgmt.  
& Commerce  
in UP among  
Top 124 Private  
BBA Colleges by  
**Outlook**

Ranked among  
**Top 15**  
Universities in  
India by **India  
Today Aspire**

# INDUSTRY ALIGNED PROGRAM 4.0

**O**ur Role-based training is designed to lead to specific industry-recognized certification training. These Industry - oriented training for Students helps boost their career growth and enhances their employability and productivity leading to better remuneration.

We have business knowledge skills training through the year for fresh graduates, and students in their final years to help them align their skills to the Corporate World.

The curriculum has been designed in consultation with industry professionals and corporate leaders to ensure that students undergo industry-aligned learning which makes them job-ready on immediate completion of the course.

**Programs to choose from by Industrial Experts**

**An Opportunity Like Never Before (For B.Tech/ MBA/ BCA/ MCA)**

Apart from building a lucrative and futuristic career in various fields, Sanskriti University focuses on raising overall intellect of the students making them compatible with the advance features by providing numerous Job-Oriented certified programs associated with upGrad specifically designed for working professionals for building up their profile and placement assistance.

## **Business Analytics**

- Session of 120 hours
- 5 Interview assured

## **FBCCA (Fundamentals of Business Communication & Cognitive Ability)**

- Session of 120 hours
- 3 Job Opportunities

## **Full Stack Development**

- Secure 10 interviews

## **Certificate Program in AI and ML**

- Session of 200 hours

## **Fundamentals of Programming**

- Session of 150 hours





# SOCIAL OUTREACH



Sanskriti Ayurvedic & Unani Medical College and Hospital were converted into LI Centre for patients in coordination with district administration, free of cost.

Distribution of food, free masks and sanitizers.



Organized free Medical Health Check-up camps.



A Sanitization Tunnel has been created to sanitize all the visitors and employees of the University.



Happiness Kit distributed to the differently abled students.



Sanskriti Ayurvedic & Unani Medical College and Hospital distributed free Kadha & Joshanda packets.

# STATE OF THE ART INFRASTRUCTURE



- Lush Green Campus
- Well-Equipped Laboratories
- Surveillance by CCTV
- Airy & Well-lit Classrooms
- Unique Architecture
- Home away from Home
- Wi-Fi enabled Campus
- Serene Atmosphere
- Solar Powered-Environment Friendly Campus







# CAMPUS

**T**he Campus is like an article of faith at Sanskriti University. The vividly colorful campus complements the intense academic environment in the classrooms which enhances the overall experience of the students. A walk across the length of the campus would present many different hues and colors such as a range of co-curricular activities and extra-curricular activities, students hanging out discussing life, studies, career, politics, sports, etc. Everyone gets exposure to a variety of social, cultural & intellectual, recreational opportunities. Such experiences enrich the lives of students and help them discover their full potential. Students learn the art of managing people, resources, and processes as well as handling uncertainties. The bouquet of facilities and services available on the campus lubricates the functioning of this very large machine and makes life easy for students living far from home.

“



## CLASSROOMS

The Classrooms at the University are spacious and airy. They are enabled with Audio-Visual teaching aids. Internet connectivity further provides access to a wealth of knowledge at the click of a button.

“



## LIBRARY

Libraries are well-equipped with a collection of more than 1 lakh books, journals & magazines. It has a multiple reading halls, a reprographic facility, and webinar capability.





## SCIENTIFIC LABORATORIES

The University has fully equipped labs that allow the students to experiment and practice the theoretical learning they have acquired in classrooms.



## HOSTELS

Separate AC/ Non-AC hostel for boys and girls with furnished rooms are available. Round the clock internet connectivity through Wi-Fi. Providing them nutritious food, RO safe drinking water, round-the-clock water supply, etc. gives the students a feeling of being at home.



## COMPUTER CENTRE

Sanskriti University has well equipped computer centres to cater the needs of the students and faculty members of the University. The laboratories possess adequate computer systems and supporting equipments with latest configurations.



## MEDICAL FACILITY

Sanskriti University has engaged Nayati Medicity, the leading hospital in this region, for looking after the medical needs on the campus.



## SPORTS

Sanskriti is endowed with playgrounds for various sports such as Cricket, Football, Volleyball, Basketball, Badminton, Table Tennis, Lawn Tennis as well as indoor games like Carrom, Flying Hockey, Pool and Chess etc.



## CAFETERIA

The University has a well-equipped and furnished cafeteria to ensure that students are provided healthy and hygienic food.





## GYMNASIUM

A well-equipped air-conditioned Gym with the latest equipments and machines. Instructors and trainers are available for training gym enthusiasts. There are separate timings for boys and girls.



## SEMINAR HALLS

Seminar Halls are equipped with the latest Audio-Visual facilities to facilitate guest lectures, seminars, presentations, and other academic activities.



## TRANSPORT

The University runs a fleet of buses for facilitating safe and convenient travel for students and staff. The transportation by deluxe buses facility is being provided within a radius of 50 KM of the campus.



## FACULTY MEMBERS

More than 300+ Academicians drawn from Industry and Academia form the intellectual capital of Sanskriti University.



# COURSES TO INSPIRE YOU

**COUNCIL/  
GOVT./UGC  
RECOGNITION**



BCI



NCTE



UGC



AIU



CCIM



UPNMC



RGI



PCI

## School of Engineering & Information Technology

Name of the Programme	Minimum Duration	Branch/ Specialization	Eligibility	Annual Fee (₹)	Semester Fee (₹)
B.Tech (offering Industry Aligned Semester Certificate program in Full Stack Devp. which includes 10 interviews Opportunities)	4 Years	CS&E • Artificial Intelligence & Machine Learning	10+2 with minimum 60% marks in PCM	1,30,000/-	67,000/-
B.Tech.	4 Years	• CS&E • CE • ME	Passed 10+2 examination with Physics and Mathematics (as compulsory subjects) along with one of the following subjects: Chemistry/ Biotechnology/ Biology/ Technical Vocational Subject/ Computer Science/ Information Technology/ Informatics Practices/ Agriculture/ Engineering Graphics/ Business Studies obtained at least 45% marks in the above subjects taken together.	1,15,000/-	59,500/-
B.Tech. (Lateral Entry) / Migration	3 Years	• CS&E • CE • ME	Lateral Entry: Minimum 55% marks in 3 years Diploma recognized by Board of Technical Education in appropriate branch of Engineering/ B.Sc. (PCM) with minimum 60% marks in the above subjects taken together. Migration: Clear pass in B.Tech. first-year from a recognized University in the same discipline, subject to matching of courses.	1,15,000/-	59,500/-



School of Engineering & Information Technology					
Name of the Programme	Minimum Duration	Branch/ Specialization	Eligibility	Annual Fee (₹)	Semester Fee (₹)
M.Tech.	2 Years	<ul style="list-style-type: none"> <li>• CS&amp;E • ME</li> <li>• CE (Structural Engineering)</li> </ul>	B.Tech. with minimum 55% marks in the relevant branch or 60% in MCA for Computer Science & Engineering.	60,000/-	32,000/-
BCA	3 Years	Computer Applications	10+2 with Mathematics/ Computer Science/ Information Practices etc. with minimum 50% marks in best four subjects including the above subjects.	50,000/-	27,000/-
MCA	2 Years	Computer Applications	Passed BCA/ Bachelor Degree in Computer Science Engineering or equivalent Degree. OR passed B.Sc./ B.Com./ B.A. with Mathematics at 10+2 Level or at Graduation Level (with additional bridge Courses as per the norms of the concerned University). Obtained at least 50% marks (45% marks in case of candidates belonging to reserved category) in the qualifying Examination.	60,000/-	32,000/-
Integrated BCA + MCA	5 Years	Computer Applications	10+2 with Mathematics/Computer Science/Information Practices etc. with minimum 50% marks in best four subjects including the above subjects.	50,000/-	27,000/-

University Polytechnic					
Name of the Programme	Minimum Duration	Branch/ Specialization	Eligibility	Annual Fee (₹)	Semester Fee (₹)
Diploma in Engineering	3 Years	<ul style="list-style-type: none"> <li>• CS&amp;E • CE</li> <li>• EE • ECE</li> <li>• ME</li> </ul>	10th with minimum 35% marks in aggregate.	42,000/-	23,000/-
Lateral Entry in 2nd year of Diploma in Engineering After 10+2	2 Years	(Automobile / Production) <ul style="list-style-type: none"> <li>• Fire Safety</li> </ul>	10+2 with Science/ Mathematics/ Vocational subject or 10th + 2 Year ITI in appropriate Specialization with 50% marks.	45,000/-	24,500/-

School of Management & Commerce					
Name of the Programme	Minimum Duration	Branch/ Specialization	Eligibility	Annual Fee (₹)	Semester Fee (₹)
BBA	3 Years		10+2 with minimum 50% marks in best four relevant subjects.	45,000/-	24,500/-
B.Com.	3 Years		10+2 with minimum 50% marks in best four relevant subjects.	30,000/-	17,000/-
B.Com. (Hons.)	3 Years		10+2 with minimum 50% marks in best four relevant subjects.	45,000/-	24,500/-
MBA	2 Years	With Dual Specialization in any two of below: <ul style="list-style-type: none"> <li>• Human Resource</li> <li>• Finance</li> <li>• International Business</li> <li>• Marketing Management</li> <li>• Hospital &amp; Health Care</li> <li>• Hospitality &amp; Tourism</li> </ul>	Bachelor's Degree (any discipline) with 50% marks in aggregate. Preference will be given to candidates who qualified CAT/ MAT/ XAT/ NMAT with good score.	1,15,000/-	59,500/-
Integrated BBA+MBA	5 Years		10+2 with minimum 50% marks in best four relevant subjects.	50,000/-	27,000/-
MBA (offering Industry Aligned Semester Certificate program in Business Analytics which includes 5 interviews Opportunities)	2 Years	Business Analytics	Bachelor Degree (any discipline) or equivalent with 50% marks in aggregate.	1,30,000/-	67,000/-

School of Tourism & Hospitality					
Name of the Programme	Minimum Duration	Branch/ Specialization	Eligibility	Annual Fee (₹)	Semester Fee (₹)
B.Sc.	3 Years	Hotel Management	10+2 with minimum 50% marks in best four subjects.	60,000/-	32,000/-

## School of Agriculture

Name of the Programme	Minimum Duration	Branch/ Specialization	Eligibility	Annual Fee (₹)	Semester Fee (₹)
B.Sc (Hons)	4 Years	Agriculture	10+2 with PCM/ PCB/ Agriculture with minimum 50% marks in aggregate.	67,000/-	35,500/-
Diploma	1 Year	Agriculture Engineering	10th with minimum 50% marks in aggregate.	26,000/-	14,000/-
M.Sc.	2 Years	Agriculture (Agronomy)	Graduate in relevant subject with minimum 50% marks in aggregate.	50,000/-	27,000/-

Note:- Apart from course fee Rs.1000/-will charge for Diploma certificate.

## School of Education

Name of the Programme	Minimum Duration	Branch/ Specialization	Eligibility	Annual Fee (₹)	Semester Fee (₹)
BA B.Ed./B.Sc. B.Ed.	4 Years	Education	10+2 with at least 50% aggregate marks in Humanities/ Science	40,000/-	22,000/-
B.Ed.	2 Years	Education	Graduation in any stream with minimum 50% marks in aggregate.	60,000/-	32,000/-
D.EL.Ed.	2 Years	Education	Graduation in any stream with minimum 50% marks in aggregate. (Through state Govt. Counselling)	-	-
B.El.Ed.	4 Years	Education	10+2 in any stream with minimum 50% marks in aggregate.	40,000/-	22,000/-
M.Ed.	2 Years	Education	B.Ed. with 50% marks in aggregate or equivalent.	50,000/-	27,000/-

School of Rehabilitation (Approved by RCI)					
Name of the Programme	Minimum Duration	Branch/ Specialization	Eligibility	Annual Fee (₹)	Semester Fee (₹)
B.Ed. (Spl. Edu.)	2 Years	LD	Candidates with at least 50% marks either in the Bachelor's degree and/ or in the Master degree in Sciences/ Social Sciences/ Humanities/ Bachelors in Engineering or Technology with Specialization in Science and Mathematics with 55% marks or any other qualification equivalent, are eligible for admission to the programme. (As per RCI Norms)	60,000/-	32,000/-
D.Ed. (Spl. Edu.)	2 Years	• CP • ASD • MR	10+2 with minimum 50% marks. (As per RCI Norms)	-	-

School of Law & Legal Studies (Approved by BCI)					
Name of the Programme (Integrated)	Minimum Duration	Branch/ Specialization	Eligibility	Annual Fee (₹)	Semester Fee (₹)
BA LLB (Hons.)	5 Years	Law	10+2 with minimum 45% marks in Aggregate.	60,000/-	32,000/-
B.Com LLB (Hons.)	5 Years	Law	10+2 with minimum 45% marks in Aggregate.	60,000/-	32,000/-

School of Fashion Designing					
Name of the Programme	Minimum Duration	Branch/ Specialization	Eligibility	Annual Fee (₹)	Semester Fee (₹)
Diploma	3 Years	Fashion Designing	10th with minimum 50% marks in aggregate.	42,000/-	23,000/-
Lateral Entry in 2nd year of Diploma After 10+2	2 Years	Fashion Designing	10+2 with minimum 50% marks in best four subjects.	45,000/-	24,500/-
B.A.	3 Years	Fashion Designing	10+2 with minimum 50% marks in best four subjects.	50,000/-	27,000/-



School of Humanities & Social Science					
Name of the Programme	Minimum Duration	Branch/ Specialization	Eligibility	Annual Fee (₹)	Semester Fee (₹)
B.A.	3 Years	Psychology (Hons.)	Minimum 50% in best of four subjects in 10+2 (Senior Secondary) from any of the recognized Central or State boards in India or equivalent from abroad.	30,000/-	17,000/-

School of Yoga & Naturopathy					
Name of the Programme	Minimum Duration	Branch/ Specialization	Eligibility	Annual Fee (₹)	Semester Fee (₹)
BNYS	5.6 Years	Naturopathy and Yogic Sciences	10+2 with Physics, Chemistry & Biology as compulsory subjects, having obtained minimum 50% marks in the above subjects taken together.	1,00,000/-	52,000/-
Post Graduate Diploma	1 Year (including 6 months Internship)	Yoga and Naturopathy	Graduate in any stream with minimum 45% marks in aggregate.	24,000/-	14,000/-

School of Basic & Applied Sciences					
Name of the Programme	Minimum Duration	Branch/ Specialization	Eligibility	Annual Fee (₹)	Semester Fee (₹)
B.Sc.	3 Years	Biotech	10+2 or equivalent with Agriculture/ Biology/ Biotechnology/ PCM with minimum 50% marks in best four including the relevant subjects.	45,000/-	24,500/-
B.Sc.	3 Years	Forensic Science	Pass with 60% aggregate marks in 10+2 with English, Physics, Chemistry and Mathematics/ Biology/ Biotechnology or equivalent subject.	70,000/-	37,000/-
M.Sc.	2 Years	<ul style="list-style-type: none"> <li>• Biotech</li> <li>• Industrial Chemistry</li> </ul>	Graduation in Science with minimum 50% marks in aggregate with relevant subject.	30,000/-	17,000/-

## School of Medical & Allied Sciences

Name of the Programme	Minimum Duration	Branch/ Specialization	Eligibility	Annual Fee (₹)	Semester Fee (₹)
DMLT	3 Years	Medical Lab Technology	10th with minimum 50% marks in aggregate.	50,000/-	27,000/-
DMLT	2 Years	Medical Lab Technology	10+2 examination with Physics, Chemistry & Biology as compulsory subjects, having obtained minimum 50% marks in the above subjects taken together.	50,000/-	27,000/-
BPT	4.6 Years (including 6 months Internship)	Physiotherapy	10+2 with Physics, Chemistry & Biology as compulsory subjects having obtained minimum 50% marks in the above subjects taken together.	75,000/-	39,500/-
B.Sc. (MLT)	3 Years	Medical Lab Technology	10+2 with Physics, Chemistry & Biology as compulsory subjects, having obtained minimum 50% marks in the above subjects taken together.	60,000/-	32,000/-
B.Sc. (MLT) Lateral Entry	2 Years	Medical Lab Technology	Pass with 60% aggregate marks in Diploma (Medical Lab Technology) [3 years after 10th or 2 years after 10+2, from a recognized board or equivalent]	60,000/-	32,000/-
Bachelor of Optometry (B.Optom.)	4 Years	Optometry	10+2 with Physics, Chemistry & Biology/ Mathematics as compulsory subjects, having obtained minimum 50% marks in the above subjects taken together.	60,000/-	32,000/-
B.Sc.	3 Years	Cardiovascular Technology	10+2 with Physics, Chemistry & Biology as compulsory subjects, having obtained minimum 50% marks in the above subjects taken together.	60,000/-	32,000/-
MPT	2 Years	<ul style="list-style-type: none"> <li>• Orthopedics</li> <li>• Sports</li> <li>• Neurology</li> <li>• Pediatrics</li> </ul>	BPT with minimum 50% marks in aggregate and completion of compulsory internship of 6 months.	50,000/-	27,000/-

Sanskriti Ayurvedic Medical College & Hospital					
Name of the Programme	Minimum Duration	Branch/ Specialization	Eligibility	Annual Fee (₹)	Semester Fee (₹)
BAMS	5.6 Years (100 Seats)	Ayurvedic Medicine & Surgery	10+2 examination with Physics, Chemistry & Biology as compulsory subjects, having obtained minimum 50% marks in the above subjects taken together. (As per Council/ Ayush/ NEET/ CET/ CPAT norms.)	-	-

Sanskriti Unani Medical College & Hospital					
Name of the Programme	Minimum Duration	Branch/ Specialization	Eligibility	Annual Fee (₹)	Semester Fee (₹)
BUMS	5.6 Years (60 seats)	Unani Medicine & Surgery	10+2 examination with Physics, Chemistry & Biology as compulsory subjects, having obtained minimum 50% marks in the above subjects taken together. (As per Council/ Ayush/ NEET/ CET/ CPAT norms.)	-	-

School of Pharmacy (Approved by PCI)					
Name of the Programme	Minimum Duration	Branch/ Specialization	Eligibility	Annual Fee (₹)	Semester Fee (₹)
B.Pharm.	4 Years	Pharmacy	Passed 10+2 examination with English as one of the subjects and PCM and/or PCB/ PCMB as optional subjects individually. (As per PCI norms)	1,00,000/-	52,000/-
B.Pharm. Lateral Entry	3 Years	Pharmacy	Pass in D.Pharm. Course from an Institution approved by PCI under section 12 of the Pharmacy Act. (As per PCI norms)	1,10,000/-	57,000/-
D. Pharm.	2 Years	Pharmacy	As per PCI norms.	1,25,000/-	64,500/-

## School of Nursing

Name of the Programme	Minimum Duration	Branch/ Specialization	Eligibility	Annual Fee (₹)	Semester Fee (₹)
B.Sc.	4 Years	Nursing	Candidate must pass the 12th or equivalent exam with PCB and English from a recognized board. Minimum Marks: Candidates must pass the qualifying exam with 55% for General/OBC (50% for SC/ST candidates). Age Criteria: Must be 17 years as on 31 December 2020.	1,00,000/-	-

## Ph.D. Programme

Name of the Programme	Minimum Duration	Branch/ Specialization	Eligibility	Full time Fee (₹)	Part time Fee (₹)
Ph.D.	Minimum 3 years including course work and a maximum of 6 years	Please visit our website	Master degree in relevant subjects with a minimum of 55% marks (CGPA 5.5 on a 10-point scale) or equivalent from a recognized University/Institution	75,000/-	60,000/-

# HOSTEL CHARGES

AC Room Type	Annual Fee	Semester Fee
2 seater	1,23,500/-	63,750/-
3 seater	98,500/-	51,250/-
4 seater	83,500/-	43,750/-

Non AC Room Type	Annual Fee	Semester Fee
2 seater	83,500/-	43,750/-
3 seater	66,500/-	35,250/-
4 seater	63,500/-	33,750/-
5 seater	59,500/-	31,750/-
6 seater	56,500/-	30,250/-
Dormitory	54,500/-	29,250/-



# OTHER CHARGES

- Caution money Fee of ₹ 5000/- in the first year of the programme (to be paid once and will be refunded after the completion of the course).
- Examination form Fees at the rate of ₹ 250/- / ₹ 500/- for programme having Semester wise/ Yearly wise exams.
- Hostel Security in the first year of the course ₹ 5,000/- for AC Room & ₹ 2,000/- for Non -AC Room (refundable on the vacation of the hostel on successful completion of the course).
- Sanskriti Youth Club Fees per annum ₹ 1,000/- for all students.
- Alumni Association fee charged in the final year only ₹ 1,000/-.
- Laundry up to 80 clothes per month excluding undergarments, socks, handkerchiefs & woollens.
- TBA Medical Insurance Fee extra.

## Note:

- Rooms in the hostel will be allotted on a first-come-first-serve basis.
- UGC Norms will be adhered for fee refund.
- In respect of AC Accommodation in the hostel, electricity consumption beyond specified limits is chargeable.
- Students staying back during vacations have to pay hostel rent @ ₹ 5,000/- per month (without Mess).
- The fee for Hostel is subject to change, as and when required.
- The Hostel fee once paid is non-refundable. No refund will be considered even in case of students vacating the hostel during the middle of the academic year.



# SCHOLARSHIP SCHEMES

The University offers scholarship to meritorious students on the basis of marks/ CGPA obtained by them in the qualifying examinations as per the following scale:

Bachelor of Technology (B.Tech.)		
S. No.	% of Marks in 12th (PCM only)	Scholarship % on 1st year tuition fee
1	90.00 and above	90%
2	85.00-89.99	70%
3	80.00-84.99	50%
4	75.00-79.99	35%
5	70.00-74.99	25%

Master of Technology (M.Tech.)		
S. No.	% of marks in Graduation Aggregate	Scholarship % on 1st year tuition fee
1	95.00 and above	80%
2	90.00-94.99	60%
3	85.00-89.99	40%
4	80.00-84.99	20%
5	75.00-79.99	10%

Master of Business Administration (MBA)			
S. No.	MAT Percentile	CAT Percentile	Scholarship% on 1st year tuition Fee
1	99.00 and above	95.00 and above	95%
2	95.00-98.99	90.00-94.99	90%
3	85.00-94.99	80.00-89.99	50%
4	70.00-84.99	55.00 to 79.99	20%

B.A LLB (Hons.) / B.Com LLB (Hons.)		
S. No.	% of Marks in 12th	Scholarship % on Tuition Fee
1	90.00 and above	50%
2	85.00-89.99	30%
3	80.00-84.99	25%
4	75.00-79.99	20%
5	70.00-74.99	10%

Sports			
S. No.	Sports Level	Scholarship % on 1st year tuition fee	Eligibility
1	International Level	75%	Provided on the basis of Medal, performance in sports.
2	National Level	50%	
3	State Level	25%	
4	District Level	10%	

COVID-19 Warriors			
S. No.	Scheme	Scholarship % on 1st year tuition fee	Eligibility
1	Covid-19 warriors	20%	who have contributed to our society during COVID-19 and should have certification from Govt. body.

Defence Quota			
S. No.	Scheme	Scholarship % on 1st-year tuition fee	Eligibility
1	Defence	20%	Parents from defence (Serving/Ex. Service.) quota, have to show the defence card.

Girls Quota			
S. No.	Scheme	Scholarship % on 1st-year tuition fee	Eligibility
1	Girls	10% (T & C apply)	20% (Transport fee waive for Local girl students only for all the years/semesters).

Champion (Existing Student)			
S. No.	Scheme	Scholarship % on 1st-year tuition fee	Eligibility
1	SU – Existing Student	25%	Existing student who have successfully completed the qualifying examination from Sanskriti University. Eligible for admission in any course.

Physically Disability			
S. No.	Scheme	Scholarship % on 1st-year tuition fee	Eligibility
1	Disability	10%	Physically Handicapped student eligible for availing this scheme need to show medical proof from competent govt. medical authority.

Aptitude Test		
S. No.	Criteria	Scholarship % on 1st-year tuition fee
1	1st winner	25%
2	2nd winner	20%
3	3rd winner	15%

#### Note:

- At One time, Only ONE Scholarship Scheme will be Applicable for Admission.
- The student will have to maintain a minimum performance as prescribed by the University every year, without any back papers to avail the continuation of scholarship and its percentage.
- Academic performance of a student shall be the sole criterion for the continuation of Scholarship. Scholarships starting from the highest slab shall be granted based on the position in the merit list prepared school-wise. The Scholarship criteria may change every academic year.
- Scholarships will be awarded on tuition fees only (Foreign tour charges shall not be included in Scholarship).
- If any student gets a scholarship internally at the Sanskriti University level, he/she will not be allowed to avail of any kind of Scholarship either from State Government or Central Government. If he/she do so, the Scholarship received shall be withdrawn.
- University Reserves the right to change or withdraw the scholarship scheme on year to year basis. All these schemes are excluded for admission in BAMS, BUMS, B.Sc Nursing and Ph.D. courses.

# ADMISSION PROCEDURE

## Application Submission Procedure

- ♦ Candidate intending to apply should first check his/her eligibility as per the eligibility conditions laid down for each programme.
- ♦ Depending upon his/her eligibility, he/she will submit the Application Form in the prescribed format.
- ♦ The submission of the Application Form can be done online or in-person:
  - **For Online Submission:** He/She will have to register online.
  - **For Offline Submission:** He/She can download the application form and deposit the duly filled up form along with the registration fee at the following places:
    - a. University Campus: 28 K. M. Stone, Mathura-Delhi Highway, Chhata, Mathura (U.P.), India
    - b. Candidate can also collect the Application form & Prospectus @ ₹ 1,000/- from the University Campus or from the Regional Offices.
    - c. Candidate can also send a request by post, within India, to the University Campus along with a Bank Draft of ₹ 1,050/- for collecting the Application Form along with Prospectus.
- ♦ Registration Fee of ₹ 10,000/-, is to be submitted while submitting the application form. In case of online submission, online payment can be made. In case of offline submission, Bank Draft of the amount due, made in favour of 'Sanskriti University', Payable at Chhata, Mathura, Uttar Pradesh, is to be submitted along with duly filled application form.
- ♦ Candidate will have to give his/her preference for the programme, in which he/she wants to seek admission in the appropriate columns of the application form.





- ♦ In case the candidate opt for more than one programme in his/her preference in the application form, he/she will have to deposit the higher registration fees as applicable, out of the programmes opted in the preference list.
- ♦ The Registration Fees once deposited is non-refundable. The fees shall, however, be adjusted against the total fee to be deposited for the programme, if he/she is offered admission.

## Admission Offer Procedure

- ♦ The candidate registered for a particular programme, after being examined of his/her eligibility, based on his merit and availability of seats, shall be sent an offer letter.
- ♦ Candidate will normally be given 15 days time to deposit the first installment of fees.
- ♦ Candidate will be required to report for depositing the first installment at any of the following places:
  - At the University Campus.
  - Or online.
- ♦ Candidate at the time of reporting should bring the following documents:-
  - A Bank Draft of the amount indicated in the offer letter as the first installment.
  - \*Admission Form (Hard Copy) duly filled in & signed by the Candidate & Parent.
  - Proof of Date of Birth.
  - Certificate and Mark sheet of 10th & 12th Examination.
  - Certificate and Mark sheet of Graduation/Post Graduation, if applicable.
  - Migration/Transfer Certificate.
  - Conduct and Character Certificate from Head of the Institution from where the student passed the qualifying exam.

- Medical Fitness Certificate to be signed by a Registered Medical Practitioner holding a degree not lower than MBBS or equivalent.
- Aadhaar Card.
- All Original documents for verification & three sets of Photocopies of all the above-mentioned documents.
- Color Passport Size Photos - Applicant (10)
- Color Passport Size Photos - Parent (04)
- An \*undertaking on the prescribed form attached with the Prospectus, in case the result of the qualifying examination has not been declared, duly signed by the Applicant & Parent.
- ♦ On submission of the first installment of fees and verification of documents in regard to the fulfillment of eligibility conditions, the student will be given Provisional Admission in the programme.
- ♦ Candidate will be subsequently advised to report to the University on the day of commencement of the session for orientation, programme/course registration.
- ♦ Candidate will be required to deposit the balance fees before being allowed to attend classes.
- ♦ Candidate at the time of Course registration will bring Anti-ragging undertaking signed by him/her and the Parent. The formats of undertakings have to be downloaded from the website [www.antiragging.in](http://www.antiragging.in)

Note: \*Admission Forms & Undertaking are also available on the website. Hard copies, duly filled in are to be submitted.



**Scan the QR code to  
apply for Admission**

# PLACEMENT CELL

# S

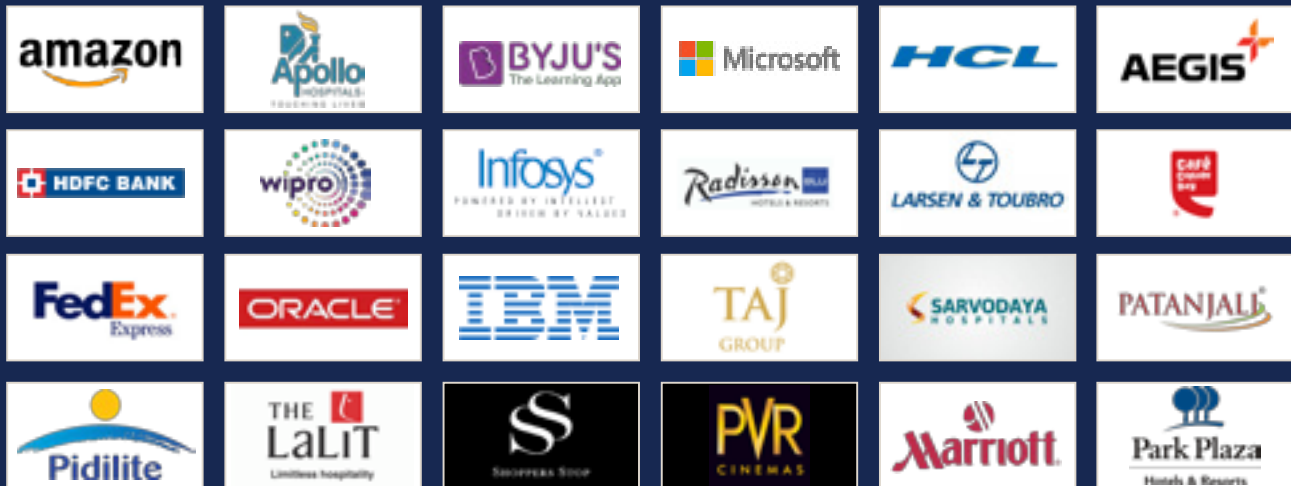
anskriti is committed to providing quality placement to all eligible final year students of different programs. The University is focused on "employability" of its students and it is taking necessary steps for grooming the students in a manner that makes students industry-ready. Sanskriti's student are very well received in the industry. Companies associated with Sanskriti to hire fresh graduates have expressed their satisfaction and complimented the University for imparting relevant skill sets to the students. Sanskriti has placed about 91% of its students with reputed companies.

**91%**  
Students  
Placed

**31  
Lakhs**  
Highest Package

**4.80 Lakhs**  
Average Package offered  
by 150+ Companies

**150+**  
Companies  
visited campus  
for placement



# FEW FINEST GEMS



**Pragati Payal**  
B.Tech (CS&E)  
IBM Bangalore



**Chandra Shekhar Mishra**  
MBA  
Byju's



**Dharam Singh**  
B.Sc (HM)  
NINO Saudi Arabia, Riyadh



**Tutan Debnath**  
B.Tech (Mech Engg.)  
L&T



**Roshni Verma**  
MBA  
K2 Cloud



**Sheenu Agrawal**  
MBA  
Authbridge Research Services



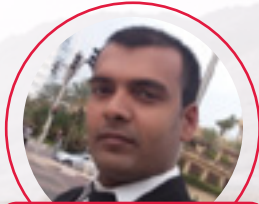
**Krishna Kant**  
Diploma (EE)  
Honda Motors Pvt. Ltd.



**Ashish Chaurasiya**  
Diploma (CE)  
NHAI



**Mohd Kasim**  
Diploma (ME)  
Eabralalam Benghazi.Co.,  
Libya, North Africa



**Mohan**  
B.Sc. (HM)  
Emirates International  
Restaurant, Chilli's Dubai



**Mohit**  
B. Com. (H)  
HTIS Telecom Pvt. Ltd



**Lalit Kumar**  
B.Sc. (HM)  
The Leela Palace, Jaipur



**Shivangi Sharma**  
M. Sc (Biotech)  
Coca Cola



**Ankit**  
B.Tech (CS&E)  
Daiichi Kogyo India Pvt. Ltd.



**Sujit Kumar Mandal**  
Diploma (EE)  
Winner Liquors Udhog P. Ltd. Nepal

# CELEBRITY @ SANSKRITI



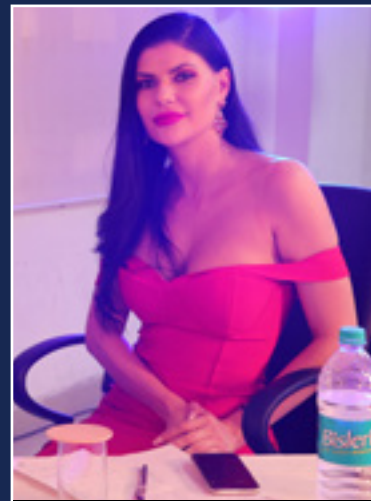
Himesh Reshammiya



Shahrukh Khan & Alia Bhatt



Singer Dev Negi



Super Model Ms. Sandra Zemaityte



Mr. World Rohit Khandelwal



Sabri Brothers



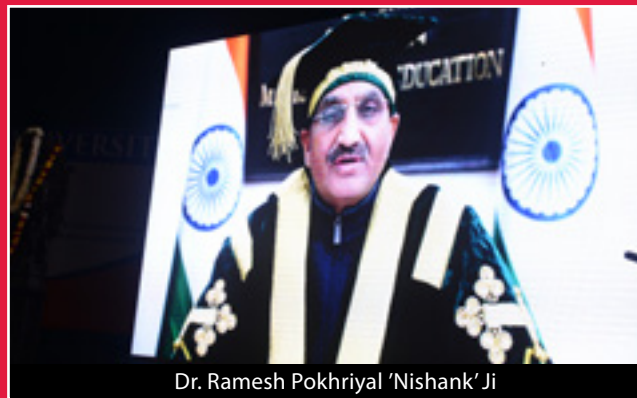
Singer Ragini Tandon



Motivational Speaker Sandeep Maheshwari



# LIFE @ SANSKRITI





**COMMUNITY RADIO**



**RADIO 91.2 FM**  
**"BINDASS BAJAO"**

**SANSKRITI AYURVEDIC MEDICAL  
COLLEGE & HOSPITAL**



**SANSKRITI  
WELLNESS  
CENTRE**





# SANSKRITI IN NEWS



संस्कृति विवि के 27 छात्रों का कैम्पस प्लेसमेंट  
संस्कृति विवि के छात्रों का कैम्पस प्लेसमेंट कार्यक्रम में भाग ले रहे हैं।

संस्कृति विवि में वसंत पंचमी का हवा  
संस्कृति विवि में वसंत पंचमी का हवा हुआ और दिवसीय आयोजन हुआ।

संस्कृति विवि में वसंत पंचमी का हवा  
संस्कृति विवि में वसंत पंचमी का हवा हुआ और दिवसीय आयोजन हुआ।

जब हम उस पर विश्वास करते हैं  
संस्कृति विवि में वसंत पंचमी का हवा हुआ और दिवसीय आयोजन हुआ।

संस्कृति विवि के छात्रों का कैम्पस प्लेसमेंट  
संस्कृति विवि के छात्रों का कैम्पस प्लेसमेंट कार्यक्रम में भाग ले रहे हैं।

संस्कृति विवि में वसंत पंचमी का हवा  
संस्कृति विवि में वसंत पंचमी का हवा हुआ और दिवसीय आयोजन हुआ।

संस्कृति विवि में वसंत पंचमी का हवा  
संस्कृति विवि में वसंत पंचमी का हवा हुआ और दिवसीय आयोजन हुआ।

जब हम उस पर विश्वास करते हैं  
संस्कृति विवि में वसंत पंचमी का हवा हुआ और दिवसीय आयोजन हुआ।

SANSKRITI UNIV.  
MATHURA, SIGNS  
MOU WITH RUSA  
Sanskriti University, Mathura, has signed a memorandum of understanding (MoU) with the Ministry of Education, Government of India, for the purpose of developing the Sanskriti University, Mathura, as a center for research, innovation, entrepreneurship, quality management, and student and faculty exchange programmes. The MoU was signed by the Chancellor of Sanskriti University, Mathura, and the Minister of Education, Government of India.

संस्कृति विवि ने विद्यार्थियों के लिए शुरू की ऑनलाइन क्लासेज  
संस्कृति विवि ने विद्यार्थियों के लिए ऑनलाइन क्लासेज शुरू की हैं।

संस्कृति विवि परिसर में लगायी गई वृक्षों की पोष  
संस्कृति विवि परिसर में लगायी गई वृक्षों की पोष।

संस्कृति विवि ने आनलाइन क्लास लगाकर योग के लिए किया प्रेसि  
संस्कृति विवि ने आनलाइन क्लास लगाकर योग के लिए किया प्रेसि।

सोना-चांदी के मेडल पाकर खिल उठे चेहरे  
संस्कृति विवि के छात्रों ने सोना-चांदी के मेडल पाकर खिल उठे चेहरे।

संस्कृति विवि में 'मिशन शक्ति' के तहत महिला सुरक्षा-सम्मान सप्ताह  
संस्कृति विवि में 'मिशन शक्ति' के तहत महिला सुरक्षा-सम्मान सप्ताह।

संस्कृति विवि में वसंत पंचमी का हवा  
संस्कृति विवि में वसंत पंचमी का हवा हुआ और दिवसीय आयोजन हुआ।

कोरोना के बाद होगा होस्टल इंडस्ट्री में बड़ा परिवर्तन  
कोरोना के बाद होगा होस्टल इंडस्ट्री में बड़ा परिवर्तन।

संस्कृति विवि के छात्रों ने वसंत पंचमी का हवा  
संस्कृति विवि के छात्रों ने वसंत पंचमी का हवा हुआ और दिवसीय आयोजन हुआ।

संस्कृति विवि में वसंत पंचमी का हवा  
संस्कृति विवि में वसंत पंचमी का हवा हुआ और दिवसीय आयोजन हुआ।

संस्कृति विवि में वसंत पंचमी का हवा  
संस्कृति विवि में वसंत पंचमी का हवा हुआ और दिवसीय आयोजन हुआ।

संस्कृति विवि में वसंत पंचमी का हवा  
संस्कृति विवि में वसंत पंचमी का हवा हुआ और दिवसीय आयोजन हुआ।



📍 **Campus:** 28 K. M. Stone, Mathura – Delhi Highway, Chhata, Mathura, Uttar Pradesh (INDIA)

☎ 9690899944 ✉ [enquiry@sanskriti.edu.in](mailto:enquiry@sanskriti.edu.in)

📞 **9358512345, 8095376611 Toll Free Number: 1800 120 2880**

🌐 **[sanskriti.edu.in](http://sanskriti.edu.in)**

Scan QR code to visit website

